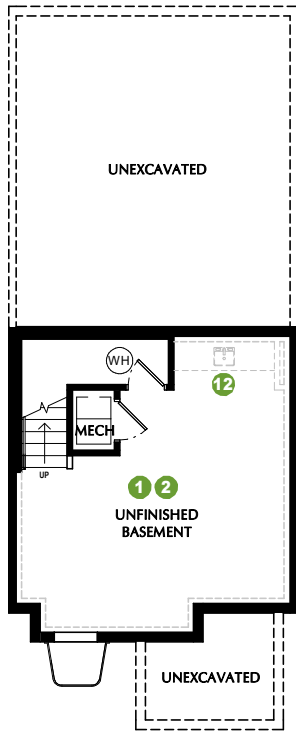


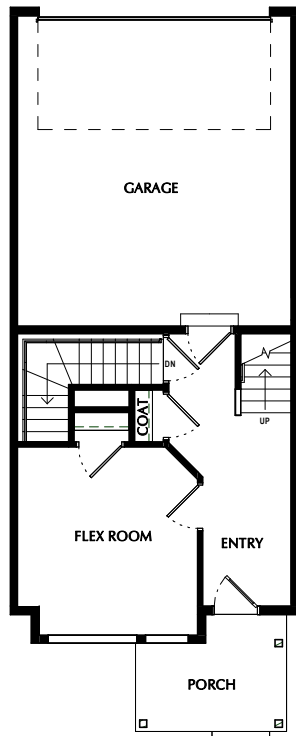
MAJOR LEAGUE + ROOF DECK - MLR

*SQUARE FOOTAGE - TOTAL: 3,169 - FINISHED: 2,745 - UNFINISHED: 424
 3-6 BEDROOMS - 2.5-4.5 BATHROOMS - 2 CAR GARAGE

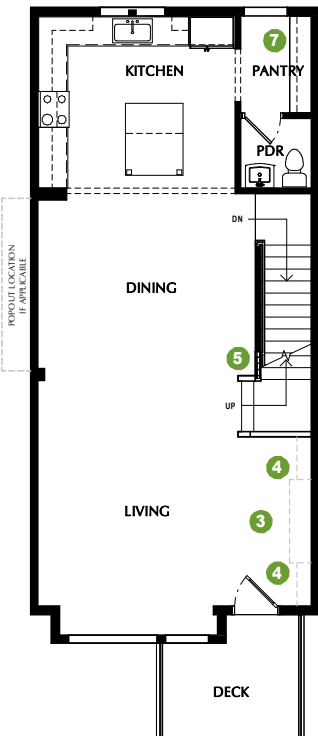
- 1 OPTION: Finished Basement
- 4 OPTION: Bookcases
- 7 OPTION: Pantry
- Face Framed Shelves
- Lower & Upper Cabinets
- 9 OPTION: Divided Owner W.I.C.
- 12 OPTION: Wet Bar
- 2 OPTION: Basement Bedroom
- 5 OPTION: Railing
- 10 OPTION: Skyroom Fireplace
- 13 OPTION: Level 4 Owner Suite
- 3 OPTION: Fireplace
- 6 OPTION: Laundry Shelves
- 8 OPTION: Tub & Shower layout
- 11 OPTION: Powder Room



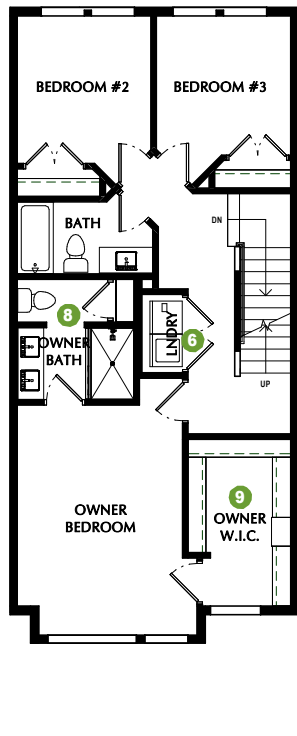
BASEMENT
8' CEILINGS



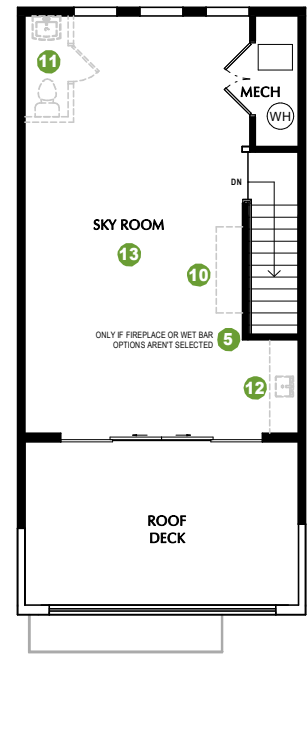
FIRST FLOOR
9' CEILINGS



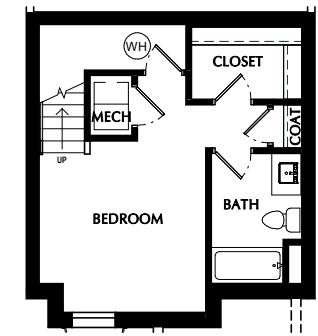
SECOND FLOOR
9' CEILINGS



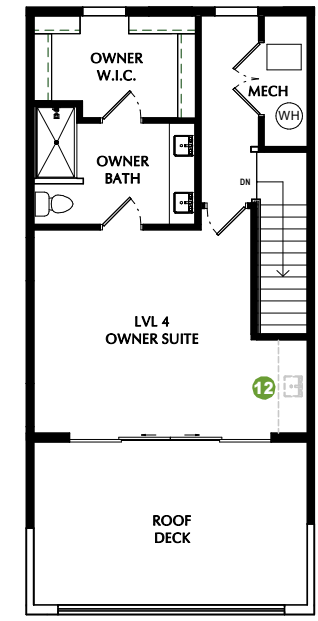
THIRD FLOOR
9' CEILINGS



FOURTH FLOOR
9' CEILINGS



2 OPTION - BASEMENT BEDROOM
8' CEILINGS



13 OPTION - LEVEL 4 OWNER SUITE
9' CEILINGS

*Listed square footage excludes garage, porch, and deck areas.

PLEASE NOTE: All drawings are artists renditions and may vary from actual product. Plans are subject to change to comply with city ordinances. All information on this sheet is subject to change without notice. Square footage, layout, and room sizes are approximate and may change per elevation. All window sizes & locations may vary.

January 25, 2024

