

# COZUMEL + ROOF DECK - OR3

\*SQUARE FOOTAGE - 2,381

3 BEDROOMS - 2.5-3 BATHROOMS - 2 CAR GARAGE

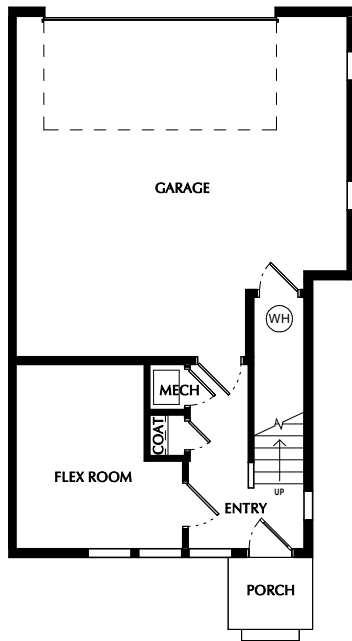
1 OPTION: Pantry  
- Face Framed Shelves  
- Lower & Upper Cabinets

2 OPTION: Fireplace  
3 OPTION: Bookcases

4 OPTION: Railing  
5 OPTION: Laundry Shelves

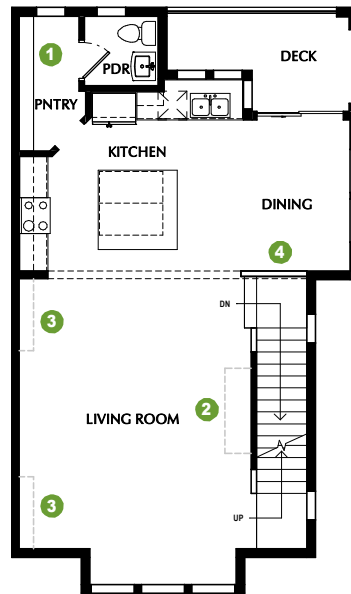
6 OPTION: Powder Room  
7 OPTION: Wet Bar

8 OPTION: Skyroom Fireplace  
9 OPTION: Workstation



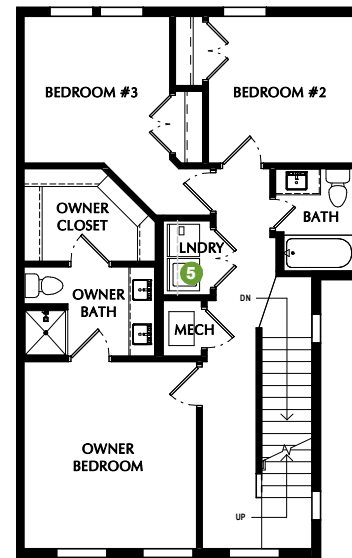
FIRST FLOOR

9' CEILINGS



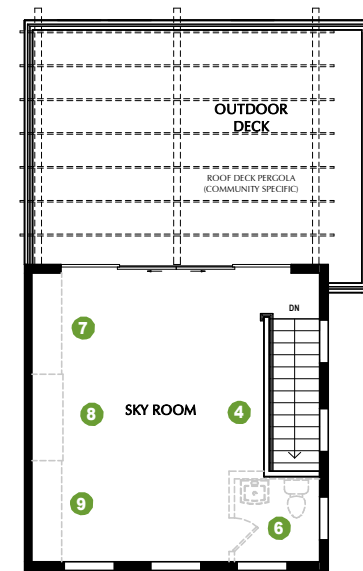
SECOND FLOOR

9' CEILINGS



THIRD FLOOR

9' CEILINGS



FOURTH FLOOR

9' CEILINGS

\*Listed square footage excludes garage, porch, and deck areas.

PLEASE NOTE: All drawings are artists renditions and may vary from actual product. Plans are subject to change to comply with city ordinances. All information on this sheet is subject to change without notice. Square footage, layout, and room sizes are approximate and may change per elevation. ALL window locations & sizes will vary per building.

JUNE 20, 2024

