

GRAND SLAM + ROOF DECK - TLR

*SQUARE FOOTAGE - TOTAL: 2,587 - FINISHED: 2,266 - UNFINISHED: 321

3-4 BEDROOMS - 2.5-3.5 BATHROOMS - 2 CAR GARAGE

1 OPTION: Finished Storage

2 OPTION: Fireplace

3 OPTION: Railing

4 OPTION: Living Room TV Wall

5 OPTION: Pantry
- Face Framed Shelves

6 OPTION: Lower & Upper Cabinets

7 OPTION: Tech Center

8 OPTION: Shower

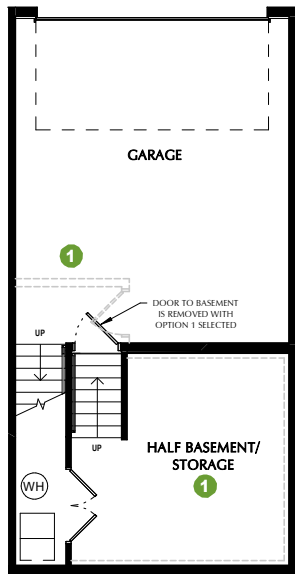
9 OPTION: Laundry Shelves

10 OPTION: Powder Room

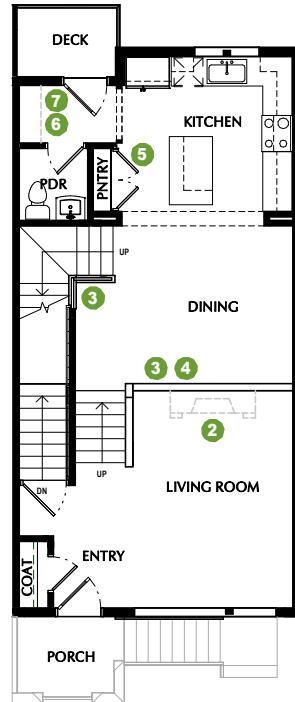
11 OPTION: Skyroom Fireplace

12 OPTION: Wet Bar

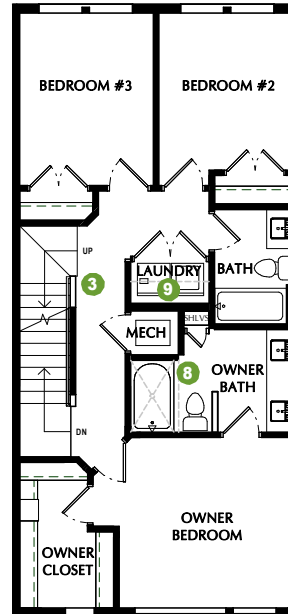
13 OPTION: Level 4 Owner Suite



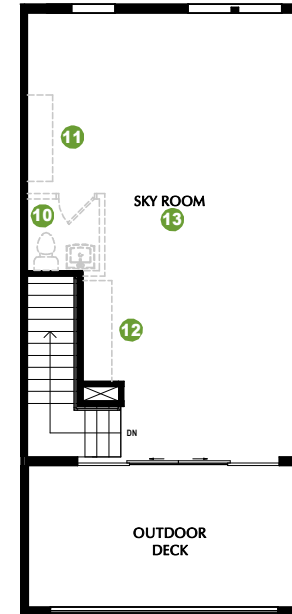
FIRST FLOOR
VARIES*



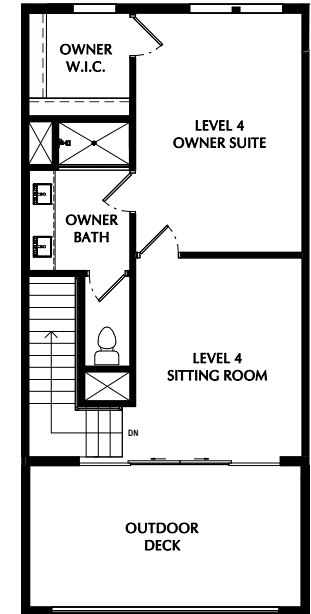
SECOND FLOOR
9' CEILINGS



THIRD FLOOR
9' CEILINGS



FOURTH FLOOR
9' CEILINGS



12 OPTION - LEVEL 4 OWNER
9' CEILINGS

*Listed square footage excludes garage, porch, and deck areas.

PLEASE NOTE: All drawings are artists renditions and may vary from actual product. Plans are subject to change to comply with city ordinances. All information on this sheet is subject to change without notice. Square footage, layout, and room sizes are approximate and may change per elevation. ALL window locations & sizes will vary per building.

APRIL 9, 2024

