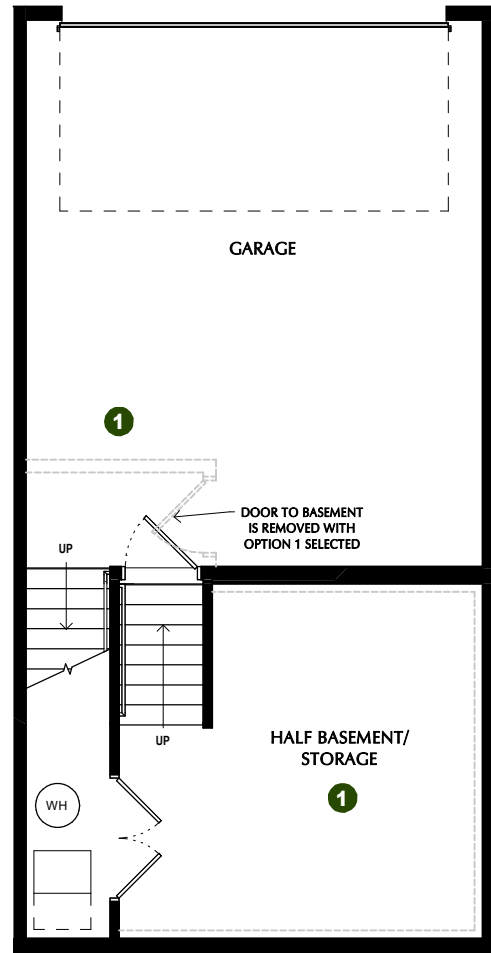


# GRAND SLAM + ROOF DECK - TLR

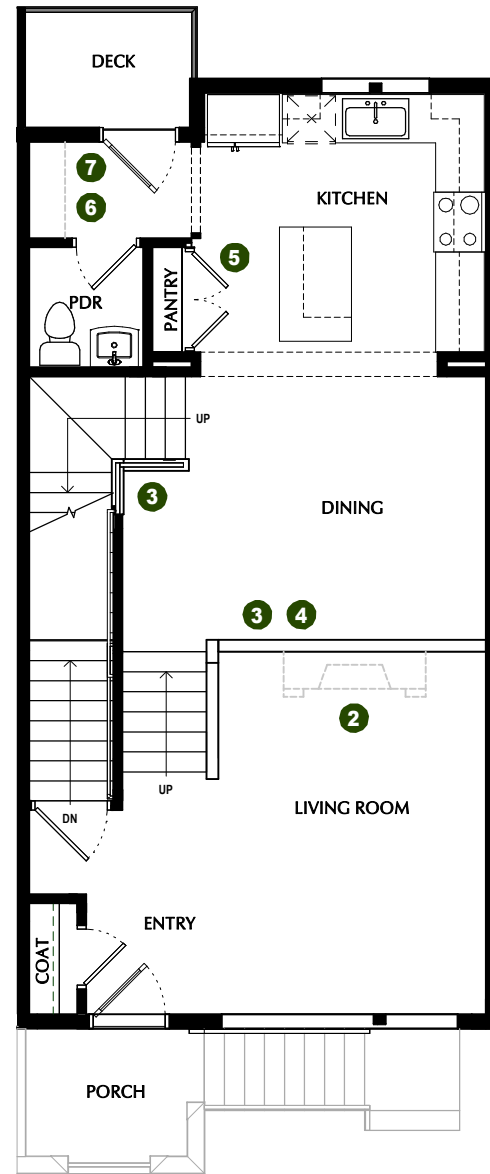
\*SQUARE FOOTAGE - TOTAL: 2,798 - FINISHED: 2,546 - UNFINISHED: 323

3-4 BEDROOMS - 2.5-3.5 BATHROOMS - 2 CAR GARAGE

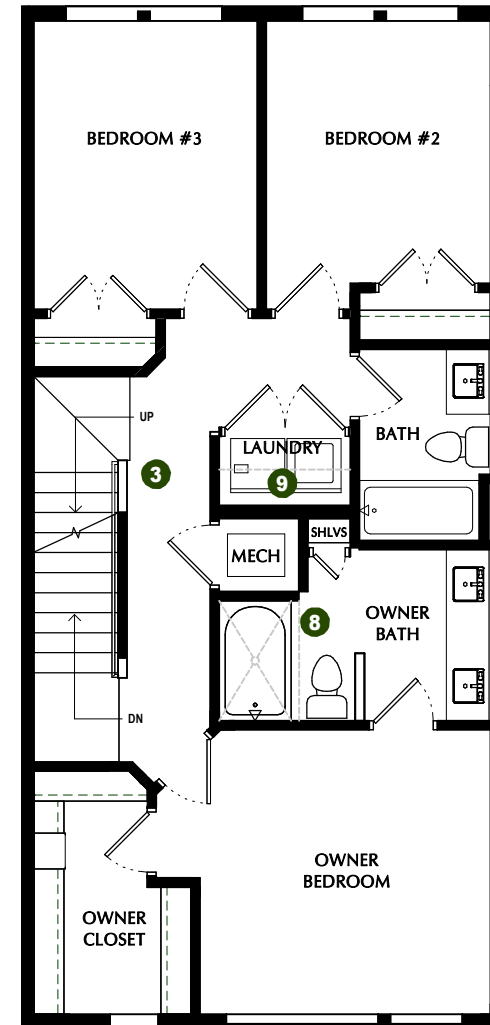
- 1 OPTION: Finished Storage
- 4 OPTION: Living Room TV Wall
- 7 OPTION: Tech Center
- 10 OPTION: Powder Room
- 2 OPTION: Fireplace
- 5 OPTION: Pantry  
- Face Framed Shelves
- 8 OPTION: Shower
- 11 OPTION: Skyroom Fireplace
- 3 OPTION: Railing
- 6 OPTION: Lower & Upper Cabinets
- 9 OPTION: Laundry Shelves
- 12 OPTION: Wet Bar
- 13 OPTION: Level 4 Owner Suite



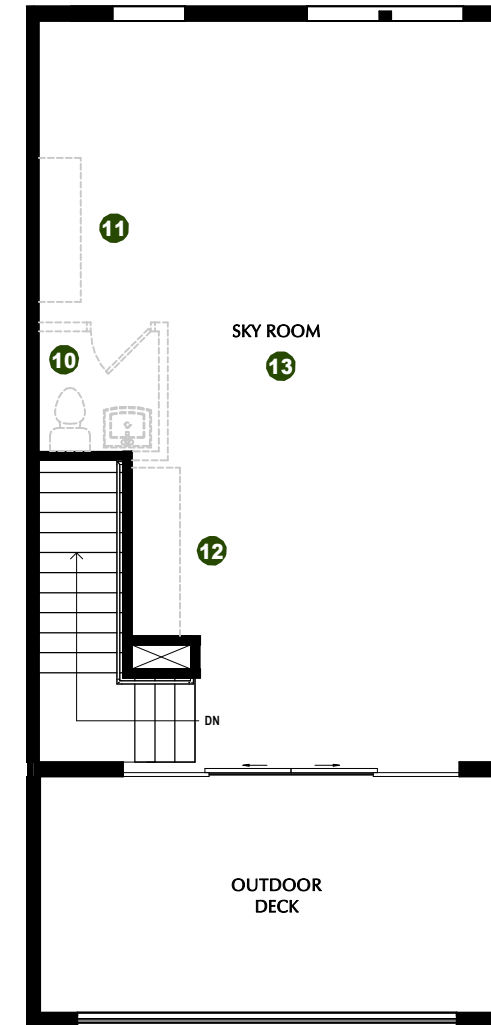
**FIRST FLOOR**  
9' CEILINGS



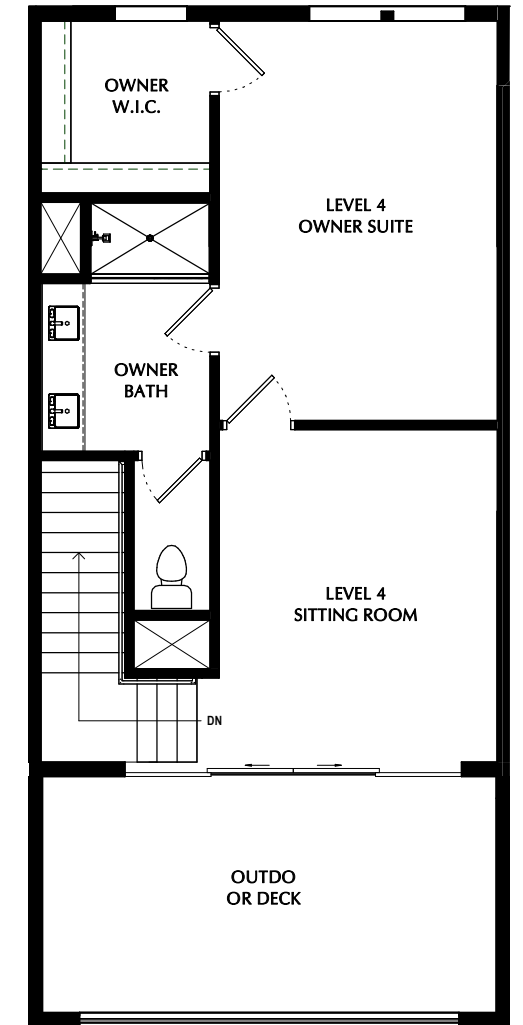
**SECOND FLOOR**  
9' CEILINGS



**THIRD FLOOR**  
9' CEILINGS



**FOURTH FLOOR**  
9' CEILINGS



**12 OPTION - LEVEL 4 OWNER SUITE**  
9' CEILINGS

\*Listed square footage excludes garage, porch, and deck areas.

PLEASE NOTE: All drawings are artists renditions and may vary from actual product. Plans are subject to change to comply with city ordinances. All information on this sheet is subject to change without notice. Square footage, layout, and room sizes are approximate and may change per elevation. All window locations & sizes may vary.

APRIL 9, 2024

