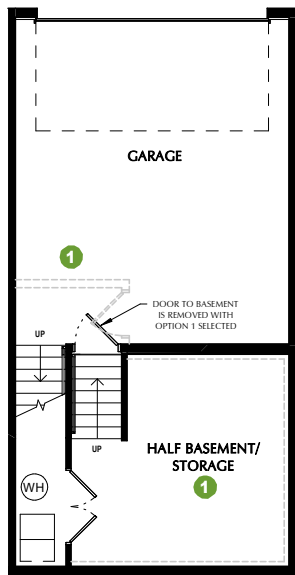


# GRAND SLAM + ROOF DECK - TLR

\*SQUARE FOOTAGE - TOTAL: 2,587 - FINISHED: 2,266 - UNFINISHED: 321

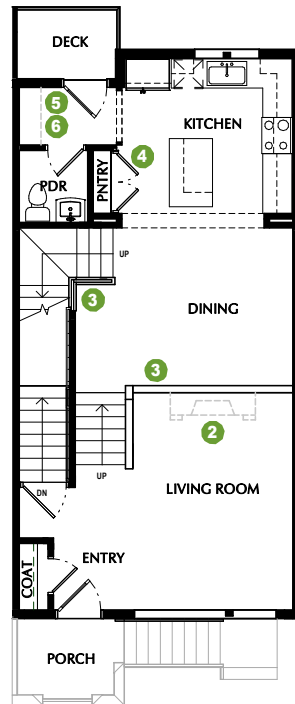
3-4 BEDROOMS - 2.5-3.5 BATHROOMS - 2 CAR GARAGE

- 1 OPTION: Finished Storage
- 2 OPTION: Fireplace
- 3 OPTION: Railing
- 4 OPTION: Pantry - Face Framed Shelves
- 5 OPTION: Tech Center
- 6 OPTION: Lower & Upper Cabinets
- 7 OPTION: Shower
- 8 OPTION: Laundry Shelves
- 9 OPTION: Powder Room
- 10 OPTION: Skyroom Fireplace
- 11 OPTION: Wet Bar
- 12 OPTION: Level 4 Owner Suite



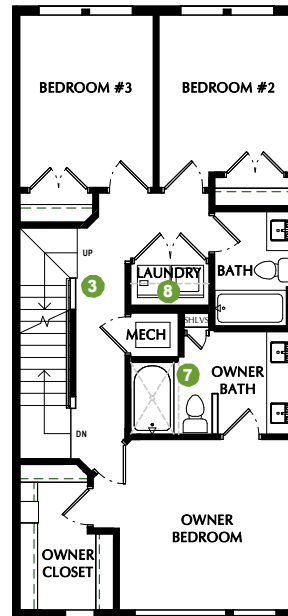
**FIRST FLOOR**

9' CEILINGS



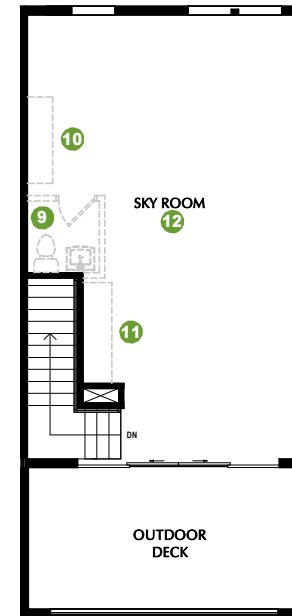
**SECOND FLOOR**

9' CEILINGS



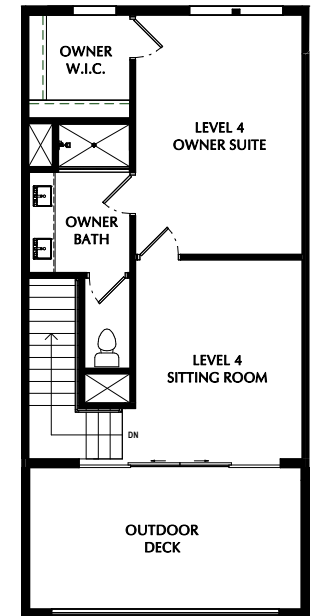
**THIRD FLOOR**

9' CEILINGS



**FOURTH FLOOR**

9' CEILINGS



**12 OPTION - LEVEL 4 OWNER**

9' CEILINGS

\*Listed square footage excludes garage, porch, and deck areas.

PLEASE NOTE: All drawings are artists renditions and may vary from actual product. Plans are subject to change to comply with city ordinances. All information on this sheet is subject to change without notice. Square footage, layout, and room sizes are approximate and may change per elevation. ALL window locations & sizes will vary per building.

January 26, 2023

