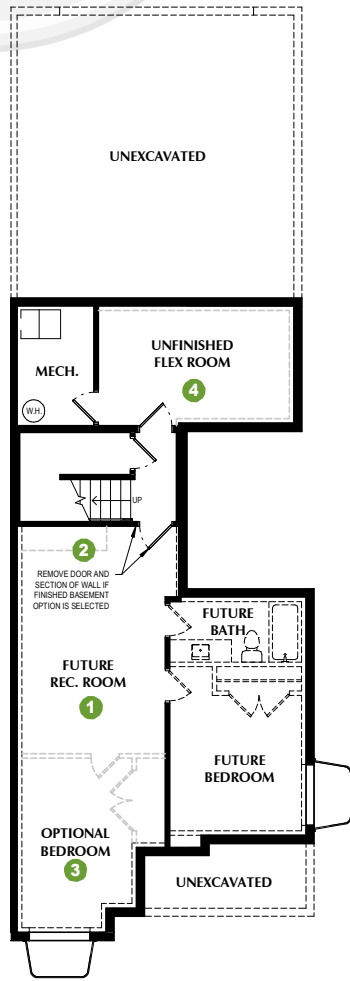


SHEFFIELD SKY

***SQUARE FOOTAGE - TOTAL: 3,773 - FINISHED: 2,708 - UNFINISHED: 1,066**

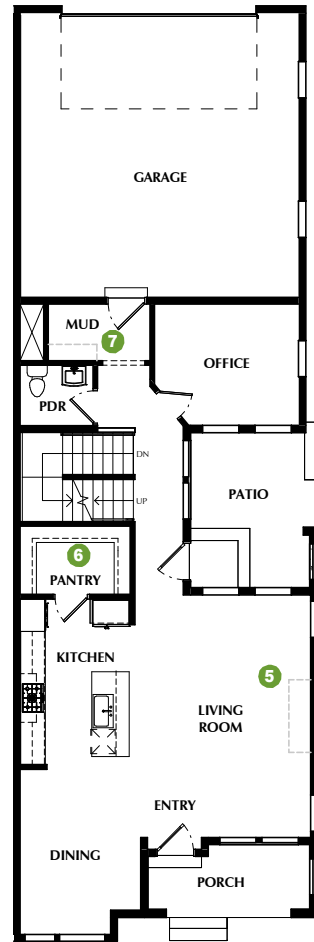
3-5 BEDROOMS - 2.5-3.5 BATHROOMS - 2 CAR GARAGE

- 1 OPTION: Finished Basement
- 2 OPTION: Wet Bar
- 3 OPTION: Bedroom #5
- 4 OPTION: Finished Flex Room
- 5 OPTION: Fireplace
- 6 OPTION: Pantry
- Face Framed Shelves
- Lower & Upper Cabinets
- 7 OPTION: Mudroom Bench & Shelves
- 8 OPTION: Railing
- 9 OPTION: Laundry Shelves
- 10 OPTION: Powder Room



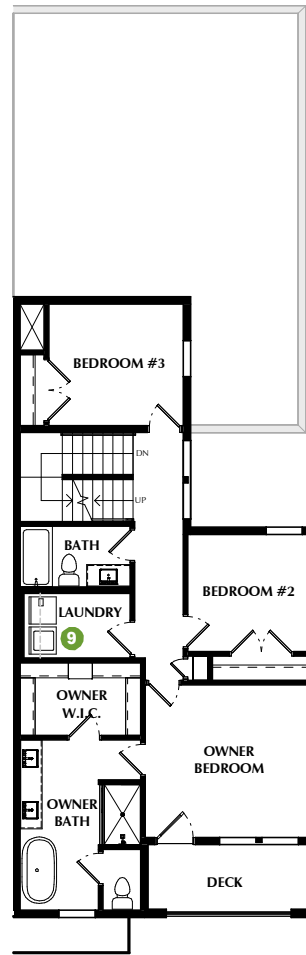
UNFINISHED BASEMENT

8' CEILINGS (Opt. 9' Ceilings)



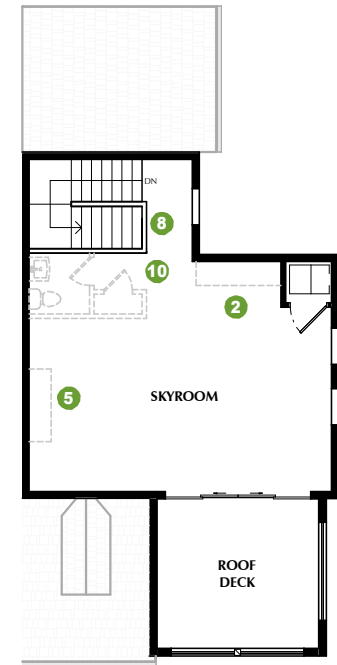
FIRST FLOOR

9' CEILINGS



SECOND FLOOR

9' CEILINGS



THIRD FLOOR

9' CEILINGS

*Listed square footage excludes garage, porch and deck areas.

PLEASE NOTE: All drawings are artists renditions and may vary from actual product. Plans are subject to change to comply with city ordinances. All information on this sheet is subject to change without notice. Square footage, layout, and room sizes are approximate and may change per elevation.

JANUARY 31, 2024

