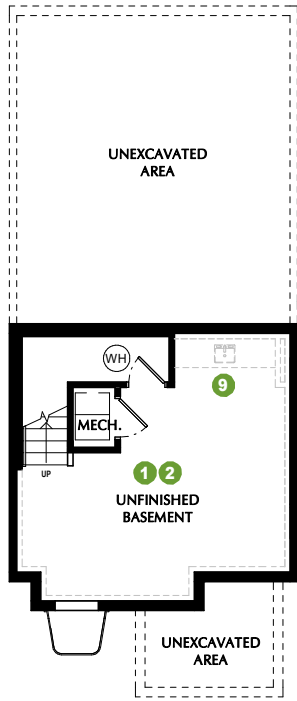


# MAJOR LEAGUE - ML

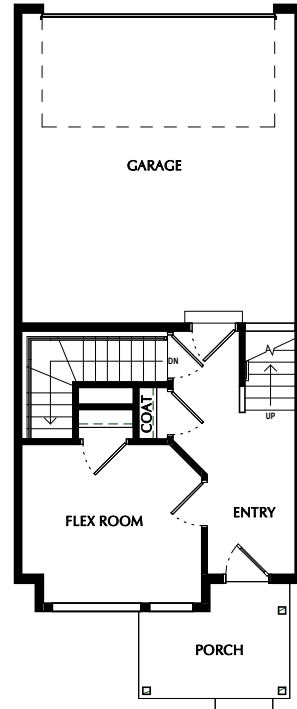
\*SQUARE FOOTAGE - TOTAL: 2,316 - FINISHED: 1,934 - UNFINISHED: 382

3-5 BEDROOMS - 2.5-3.5 BATHROOMS - 2 CAR GARAGE

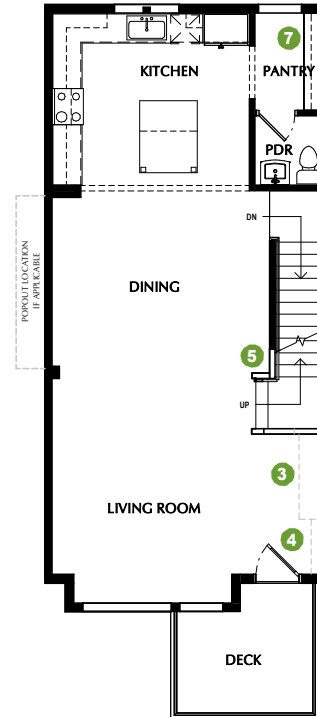
- 1 OPTION: Finished Basement
- 2 OPTION: Basement Bedroom
- 3 OPTION: Fireplace
- 4 OPTION: Bookcases
- 5 OPTION: Railing
- 6 OPTION: Laundry Shelves
- 7 OPTION: Pantry  
- Face Framed Shelves  
- Lower & Upper Cabinets
- 8 OPTION: Tub & Shower layout
- 9 OPTION: Wet Bar



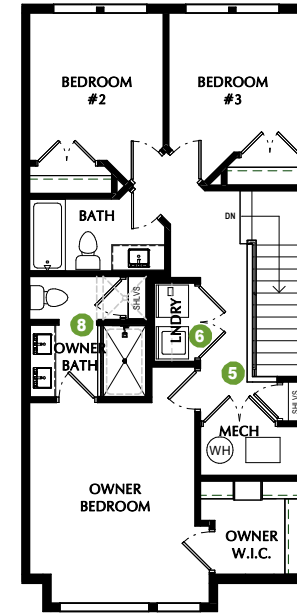
**BASEMENT**  
8' CEILINGS



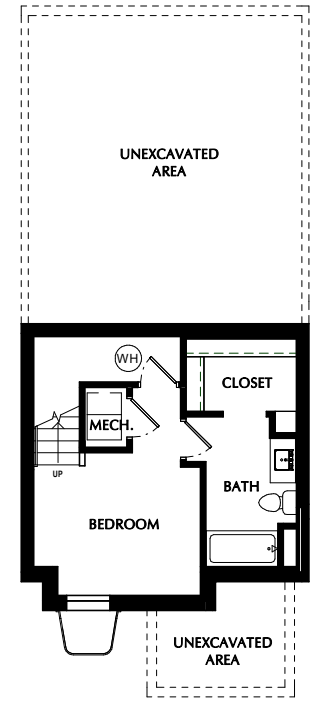
**FIRST FLOOR**  
9' CEILINGS



**SECOND FLOOR**  
9' CEILINGS



**THIRD FLOOR**  
9' CEILINGS



**2 OPTION - BASEMENT BEDROOM**  
8' CEILINGS

\*Listed square footage excludes garage, porch, and deck areas.

PLEASE NOTE: All drawings are artists renditions and may vary from actual product. Plans are subject to change to comply with city ordinances. All information on this sheet is subject to change without notice. Square footage, layout, and room sizes are approximate and may change per elevation. All window sizes & locations may vary.

MARCH 28, 2024