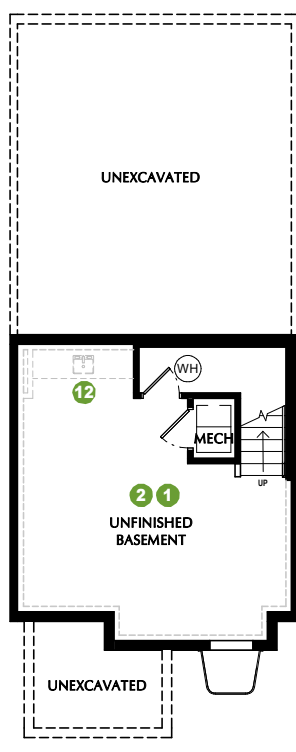


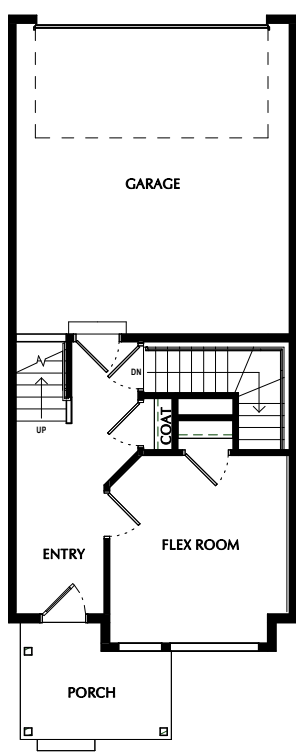
# MAJOR LEAGUE + ROOF DECK - MLR

\***SQUARE FOOTAGE - TOTAL: 3,169 - FINISHED: 2,745 - UNFINISHED: 424**  
**3-6 BEDROOMS - 2.5-4.5 BATHROOMS - 2 CAR GARAGE**

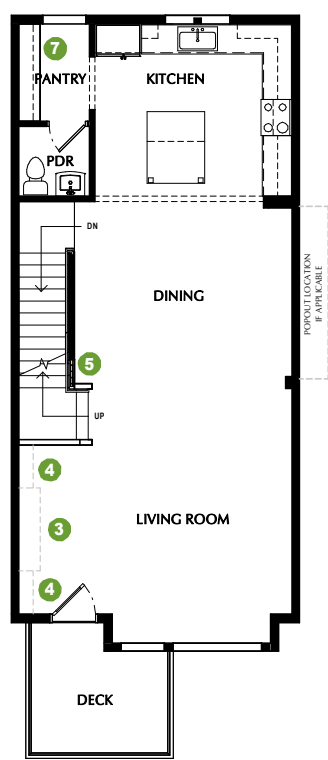
- 1 OPTION: Finished Basement
- 4 OPTION: Bookcases
- 7 OPTION: Pantry  
- Face Framed Shelves  
- Lower & Upper Cabinets
- 9 OPTION: Divided Owner W.I.C.
- 12 OPTION: Wet Bar
- 2 OPTION: Basement Bedroom
- 5 OPTION: Railing
- 10 OPTION: Skyroom Fireplace
- 13 OPTION: Level 4 Owner Suite
- 3 OPTION: Fireplace
- 6 OPTION: Laundry Shelves
- 8 OPTION: Tub & Shower layout
- 11 OPTION: Powder Room



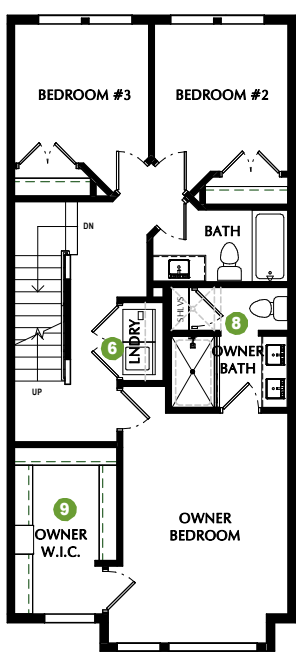
**BASEMENT**  
8' CEILINGS



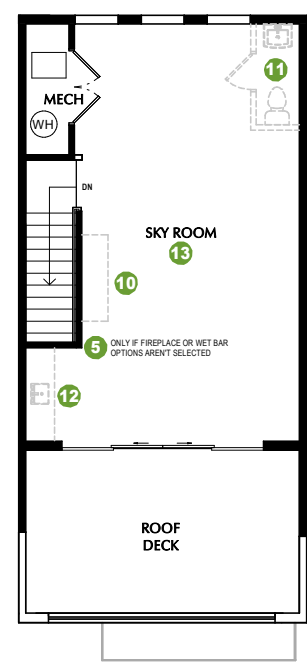
**FIRST FLOOR**  
9' CEILINGS



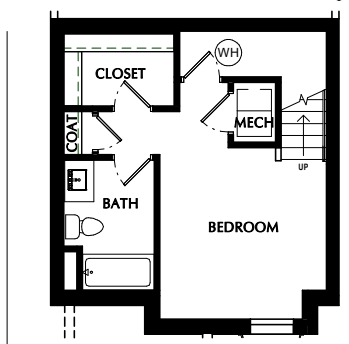
**SECOND FLOOR**  
9' CEILINGS



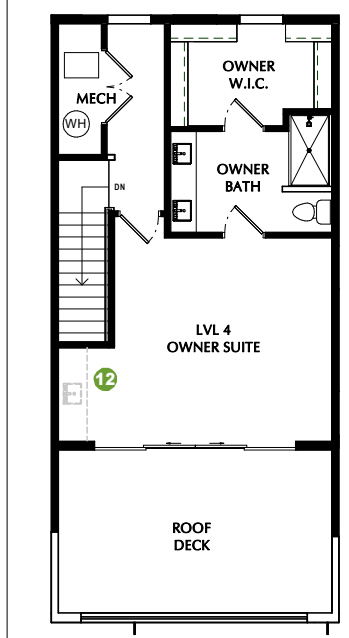
**THIRD FLOOR**  
9' CEILINGS



**FOURTH FLOOR**  
9' CEILINGS



**2 OPTION - BASEMENT BEDROOM**  
8' CEILINGS



**13 OPTION - LEVEL 4 OWNER SUITE**  
9' CEILINGS

\*Listed square footage excludes garage, porch, and deck areas.

PLEASE NOTE: All drawings are artists renditions and may vary from actual product. Plans are subject to change to comply with city ordinances. All information on this sheet is subject to change without notice. Square footage, layout, and room sizes are approximate and may change per elevation. All window sizes & locations may vary.

FEBRUARY 12, 2024

