

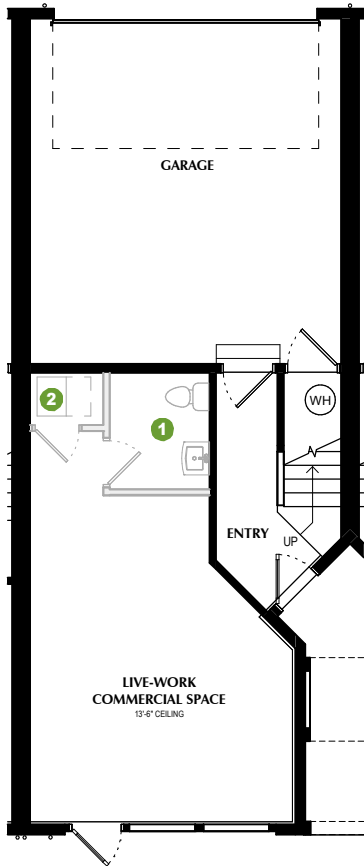
LIVE-WORK TOWNHOME (INNER UNIT)

*SQUARE FOOTAGE - 3,032

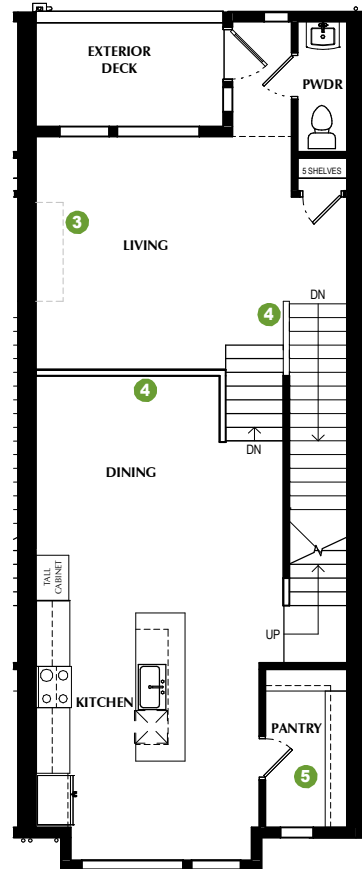
3 BEDROOMS - 2.5-3 BATHROOMS - 2 CAR GARAGE

DEDICATED LIVE-WORK AREA

- 1 OPTION: Finished ADA restroom
- 2 OPTION: Live-work Mechanical
- 3 OPTION: Fireplace
- 4 OPTION: Railing
- 5 OPTION: Pantry
- Face Framed Shelves
- Lower & Upper Cabinets
- 6 OPTION: Laundry Shelves
- 7 OPTION: Wet Bar
- 8 OPTION: Skyroom Fireplace
- 9 OPTION: Powder Room

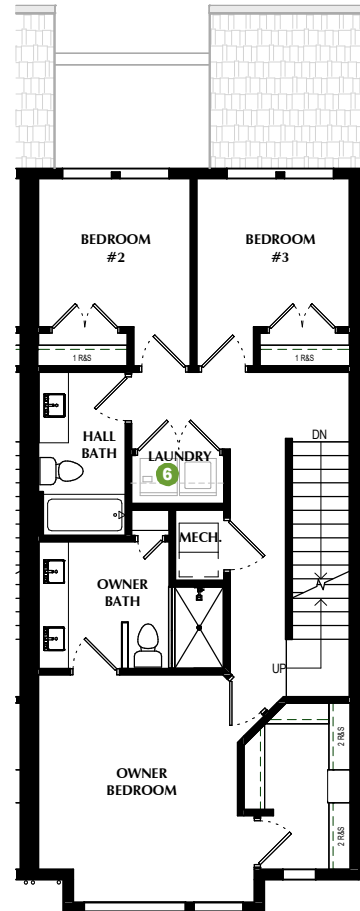


FIRST FLOOR



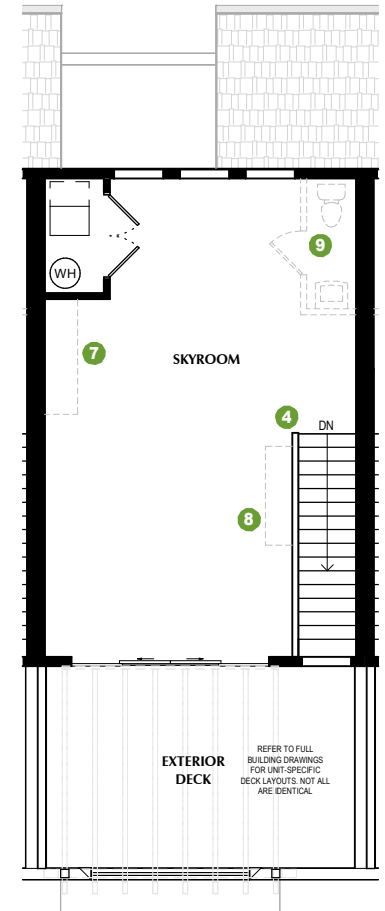
SECOND FLOOR

9' CEILINGS



THIRD FLOOR

9' CEILINGS



FOURTH FLOOR

9' CEILINGS

REFER TO FULL BUILDING DRAWINGS FOR UNIT-SPECIFIC DECK LAYOUTS. NOT ALL ARE IDENTICAL.

PLEASE NOTE: All drawings are artists renditions and may vary from actual product. Plans are subject to change to comply with city ordinances. All information on this sheet is subject to change without notice. Square footage, layout, and room sizes are approximate and may change per elevation. All windows sized & locations may vary.

JUNE 24, 2024

