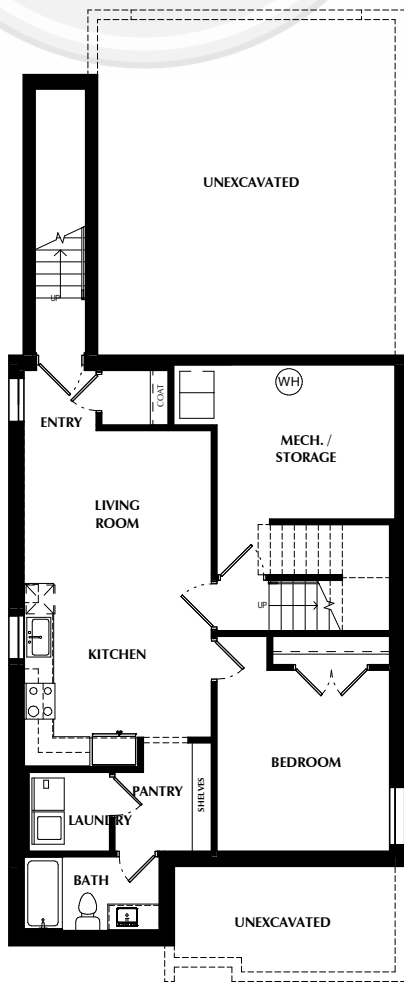


# VOYAGER - 8B

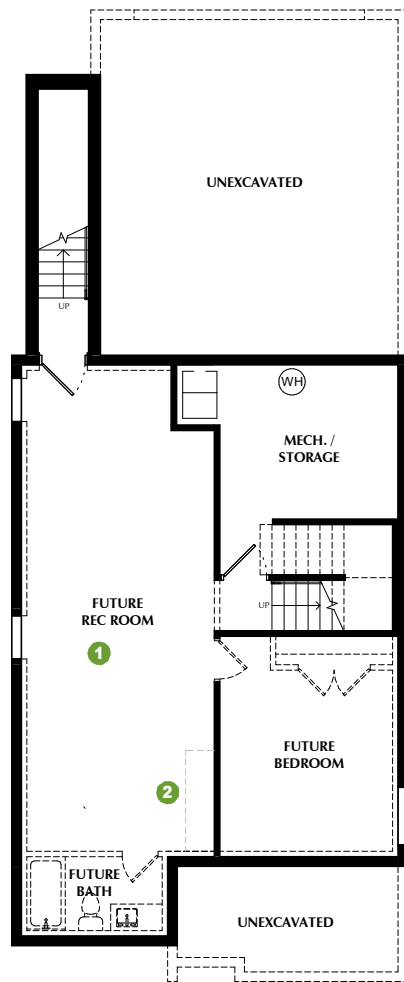
\***SQUARE FOOTAGE - TOTAL:** 3,152 - **FINISHED:** 2,009 - **UNFINISHED:** 1,143

**3 BEDROOMS - 2.5 BATHROOMS - 2 CAR GARAGE**

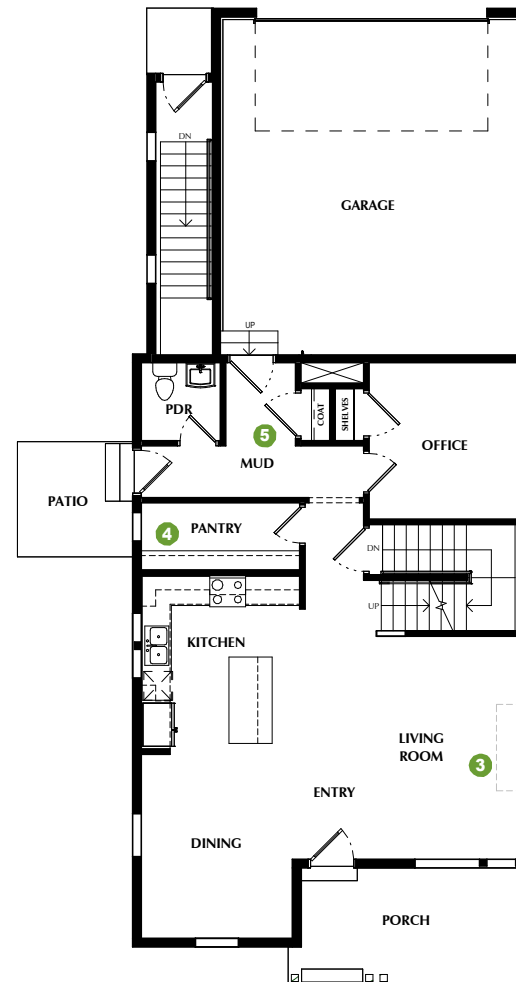
- 1 OPTION: Finished Basement
- 2 OPTION: Wet Bar
- 3 OPTION: Fireplace
- 4 OPTION: Pantry  
- Face Framed Shelves  
- Lower & Upper Cabinets
- 5 OPTION: Mudroom Bench & Shelves
- 6 OPTION: Railing
- 7 OPTION: Laundry Pass-Thru Door
- 8 OPTION: Multi-Generational Basement



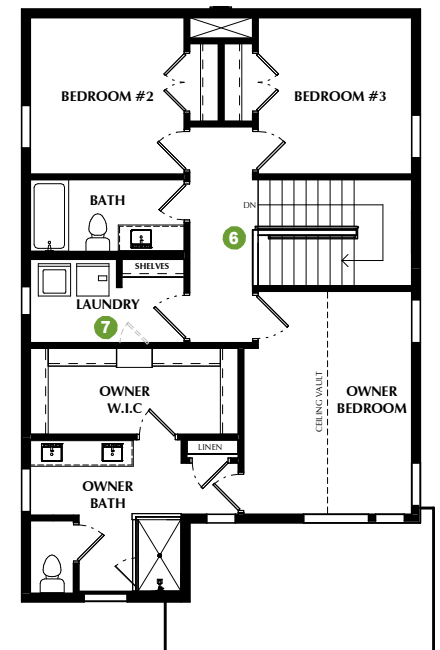
**8** OPTION - MULTI-GENERATIONAL BASEMENT  
8' CEILINGS (Opt. 9' Ceilings)



UNFINISHED BASEMENT  
8' CEILINGS (Opt. 9' Ceilings)



MAIN FLOOR  
9' CEILINGS



SECOND FLOOR  
9' CEILINGS

\*Listed square footage excludes garage, porch and deck areas.

PLEASE NOTE: All drawings are artists renditions and may vary from actual product. Plans are subject to change to comply with city ordinances. All information on this sheet is subject to change without notice. Square footage, layout, and room sizes are approximate and may change per elevation.

NOVEMBER 21, 2024

